



# MC9100/ MC9200 Series

## EMC Configuration and Accessories Guide

*Designed to assist customers and partners with model and  
configuration guidance*





## Contents

- I. MC9100 Series Configuration Guide**
- II. MC9200 Series Configuration Guide**
- III. MC9100 / MC9200 Series Accessories**



# MC9100

## Configuration Guide





## MC9100 Series

CONFIGURATION & ACCESSORY GUIDES are available on [The Source](#) and [PartnerCentral](#)

For access to additional product information including this guide, please visit:

[www.zebra.com/mc9190](http://www.zebra.com/mc9190)

Find Product Information in the **EMC Product Portfolio** on [The Source](#) and [PartnerCentral](#)



MC9100 Third party accessories:

- [www.tsl.uk.com](http://www.tsl.uk.com)
- [www.agoraleather.com](http://www.agoraleather.com)





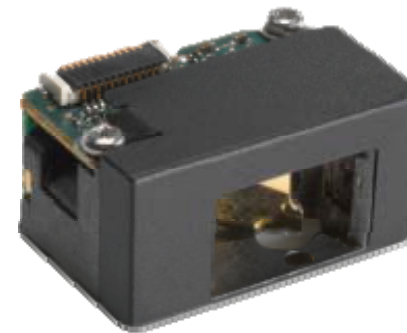
# MC9100 Configuration Matrix

CONFIGURATION OPTIONS:	MC91xx	OPTION	DESCRIPTION
Radio Option	MC91 <b>9</b> x-xxxxxxxxxx	9	WLAN 802.11 a/b/g
Form Factor	MC9190-G <b>x</b> xxxxxxxxxx	G	Gun
Data Capture options (Scanner)	MC9190-G <b>A</b> xxxxxxxxxx	A	SE960 1D Standard range laser
	MC9190-G <b>J</b> xxxxxxxxxx	J	SE1524ER Lorax Long Range Laser
	MC9190-G <b>3</b> xxxxxxxxxx	3	SE4500 Blockbuster Imager
	MC9190-G <b>5</b> xxxxxxxxxx	5	SE4500 Blockbuster Imager with DPM
	MC9190-G <b>8</b> xxxxxxxxxx	8	SE4500 Blockbuster DL Imager for Driver License
	MC9190-G <b>9</b> xxxxxxxxxx	9	SE4600 Long Range Imager
WAN Carrier options	MC9190-Gx <b>0</b> xxxxxxxxxx	0	None
Display	MC9190-Gxx <b>S</b> xxxxxxxxxx	S	Color 3.7" Diagonal (640 x 480 pixels) w/ Touch
Memory options	MC9190-Gxxx <b>W</b> xxxxxx	W	256 MB RAM / 1 GB Flash
Product Feature: User Input/Keyboard	MC9190-Gxxxx <b>A</b> xxxxx	A	28 Key Numeric Keypad
	MC9190-Gxxxx <b>E</b> xxxxx	E	53 Key Alpha-Numeric Keypad
	MC9190-Gxxxx <b>F</b> xxxxx	F	43 Key Numeric Keypad
	MC9190-Gxxxx <b>G</b> xxxxx	G	53 key VT Emulator Keypad
	MC9190-Gxxxx <b>H</b> xxxxx	H	53 key 3270 Emulator Keypad
	MC9190-Gxxxx <b>J</b> xxxxx	J	53 key 5250 Emulator Keypad
Operating System Options	MC9190-Gxxxxx <b>Q</b> xxxx	Q	Windows Mobile 6.5
	MC9190-Gxxxxx <b>Y</b> xxxx	Y	Windows Compact Embedded 6.0
Additional Features	MC9190-Gxxxxxx <b>A6</b> xx	A6	Audio, Voice, Bluetooth
	MC9190-Gxxxxxx <b>C6</b> xx	C6	Condensation Resistant with Audio, Voice, Bluetooth
Country or Custom Code	MC9190-Gxxxxxxxx <b>WR</b>	WR	Worldwide ROHS
	MC9190-Gxxxxxxxx <b>JP</b>	JP	Japan
	MC9190-Gxxxxxxxx <b>TN</b>	TN	Tunisia

## MC9100 Data Capture Methods

### Scan Engines

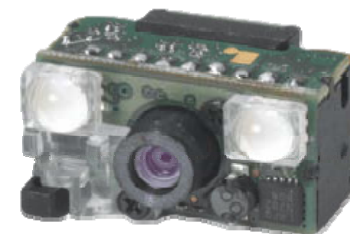
- MC9190-GA** SE961 1D Standard range laser
- MC9190-GJ** SE1524ER Lorax long range laser
- MC9190-G3** SE4500 Blockbuster imager
- MC9190-G5** SE4500 Blockbuster imager with DPM
- MC9190-G8** SE4500 Blockbuster DL imager for driver license
- MC9190-G8** SE4600 Long range imager



**MC9190-GA**  
1D Standard Range Laser



**MC9190-GJ**  
Lorax Long Range Laser



**MC9190-G3**  
**MC9190-G5**  
**MC9190-G8**  
Blockbuster Imager

## MC9100 Keypad Options

### 28 Key Numeric Telephony

Large numeric keys  
Alpha character by SMS system

Spare keypad part number:  
**KYPD-MC9XMR000-01R**



### 43 Key Shifted Alpha

Calculator style numeric  
12 direct function keys

Spare keypad part number:  
**KYPD-MC9XMT000-01R**




### 53 Key Alpha-Numeric

Full alpha-numeric keypad  
10 shifted function keys

Spare keypad part number:  
**KYPD-MC9XMS000-01R**



All replacement keypads are available as snap on, can be changed on site, without sending it to service depot. 



## MC9100 Keypad Options

### 3270 Emulator Keypad

Full alpha-numeric  
20 shifted function keys

Spare keypad part number:  
**KYPD-MC9XMV000-01R**



### 5250 Emulator Keypad

Full alpha-numeric  
20 shifted function keys

Spare keypad part number:  
**KYPD-MC9XMW000-01R**




### VT Emulator Keypad

Full alpha-numeric  
20 shifted function keys

Spare keypad part number:  
**KYPD-MC9XMU000-01R**



 The emulator keypads are only used when the MC9190-G is running the respective emulation software, otherwise the functions are same as 53- key keypad.





## MC9100 Operating Systems



Microsoft Windows Embedded  
Handheld 6.5 Classic Edition



Microsoft Windows  
Embedded Compact 6.0

### Operating System Configurations

**Microsoft Windows** Embedded  
handheld 6.5 classic edition

**Microsoft Windows** Embedded  
compact 6.0

## MC9100 Additional Features



Audio



Voice



Bluetooth

### Additional Features

**A6** Audio, Voice, Bluetooth

**C6** Audio, Voice, Bluetooth,  
Condensation Resistant



Condensation Resistant



# MC9200 Configuration Guide





## MC9200 Series

CONFIGURATION & ACCESSORY GUIDES are available on [The Source](#) and [PartnerCentral](#)

For access to additional product information including this guide, please visit:

[www.zebra.com/mc9200](http://www.zebra.com/mc9200)

- All MC9200 configurations are compatible and backward compatible with all existing accessories including: Cradles, Holsters and Cables.

Find Product Information in the **EMC Product Portfolio** on [The Source](#) and [PartnerCentral](#)



MC9200 Third party accessories:

- [www.vxicorp.com](http://www.vxicorp.com)
- [www.agoraleather.com](http://www.agoraleather.com)





# MC9200 Configuration Matrix

CONFIGURATION OPTIONS:	MC92xx	OPTION	DESCRIPTION
Radio Option	MC92N0-xxxxxxNxxxxx	N	WLAN 802.11 a/b/g/n
Form Factor	MC92N0-GxxxxxxGxxxxx	G	Gun
Data Capture options (Scanner)	MC92N0-GAxxxxxxAxxxxx	A	SE965 1D Standard range laser
	MC92N0-GJxxxxxxJxxxxx	J	SE1524ER Lorax Long Range Laser
	MC92N0-G3xxxxxx3xxxxx	3	SE4500 Blockbuster Imager
	MC92N0-G5xxYxxxxx	5	SE4500 Blockbuster Imager with DPM (Only in Premium Model)
	MC92N0-G8xxYxxxxx	8	SE4500 Blockbuster DL Imager (Only in Premium Model)
	MC92N0-G9xxxxxx9xxxxx	9	SE4600 Long Range Imager
	MC92N0-GLxxxxxxLxxxxx	L	SE4750SR Imager
	MC92N0-GMxxxxxxMxxxxx	M	SE4750MR Imager
	MC92N0-GPxxxxxxPxxxxx	M	SE4850 Extended Range Imager
WAN Carrier options	MC92N0-Gx0xxxxxx0xxxxx	0	None
Display	MC92N0-GxxSxxxxxxSxxxxx	S	Color 3.7" Diagonal (640 x 480 pixels) w/ Touch
Memory options	MC92N0-GxxxXxxxxxxXxxxxx	X	512 MB RAM / 2 GB Flash (Standard Model Config)
	MC92N0-GxxxYxxxxxxYxxxxx	Y	1GB RAM / 2 GB Flash (Premium Model Config)
Product Feature: User Input/Keyboard	MC92N0-GxxxxAxxxxxxAxxxxx	A	28 Key Numeric Keypad
	MC92N0-GxxxxExxxxxxExxxxx	E	53 Key Alpha-Numeric Keypad
	MC92N0-GxxxxFxxxxxxFxxxxx	F	43 Key Numeric Keypad
	MC92N0-GxxxxGxxxxxxGxxxxx	G	53 key VT Emulator Keypad
	MC92N0-GxxxxHxxxxxxHxxxxx	H	53 key 3270 Emulator Keypad
	MC92N0-GxxxxJxxxxxxJxxxxx	J	53 key 5250 Emulator Keypad
	MC92N0-GxxxxVxxxxxxVxxxxx	V	53 key High Visibility White Keys (Only in Premium Model)
Operating System Options	MC92N0-GxxxxQxxxxxxQxxxxx	Q	Windows Mobile 6.5 With MS Office (Only in Premium configurations with manufacturing date prior to July 1, 2016)
	MC92N0-GxxxxRxxxxxxRxxxxx	R	Windows Mobile 6.5 Without MS Office
	MC92N0-GxxxxYxxxxxxYxxxxx	Y	Windows Compact Embedded 7.0
	MC9290-GxxxxAxxxxxxAxxxxx	A	Android KitKat 4.4 • Android configurations do not support the SE4600 engine
Additional Features	MC92N0-GxxxxxA5xxxA5xxxx	A5	Audio, Voice and Bluetooth
	MC92N0-GxxxxxA6xxxA6xxxx	A6	Audio, Voice, Bluetooth and IST (Only in Premium Model)
	MC92N0-GxxxxxC6xxxC6xxxx	C6	Condensation Resistant with Audio, Voice, Bluetooth, IST (Only in Premium Model)
Country or Custom Code	MC92N0-GxxxxxxXxxxxxXXxxxx	XX	WR = Worldwide ROHS; IN= India only



## MC9200 Configurations Available



### MC9200 Variants

#### Standard

**Memory:**

- 512MB RAM / 2GB Flash Memory

**Operating Systems:**

- Windows CE 7.0
- Windows Embedded Handheld 6.5.X

#### Premium

**Increased memory:**

- 1GB RAM / 2GB Flash Memory

**Operating Systems:**

- Windows CE 7.0
- Windows Embedded Handheld 6.5.x with Microsoft Office (Office removed on premium configurations built after July 1, 2016)
- Android Kit Kat 4.4

**Added features:**

- Integrated RFID tag (for asset management)
- 53 High Visibility Keypad

**Other Options:**

- DL scan engine, DPM scan engine, Condensation Resistant

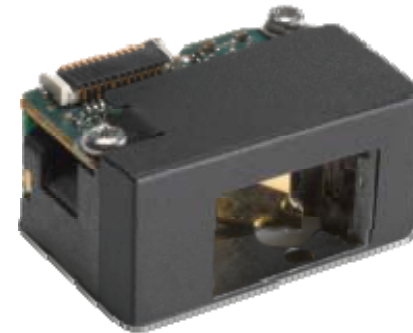
## MC9200 Data Capture Methods

### Scan Engines

- MC92N0-GA** SE965 1D Standard Range laser
- MC92N0-GJ** SE1524ER Lorax Long Range 1D laser
- MC92N0-G3** SE4500 Blockbuster imager
- MC92N0-G5** SE4500 Blockbuster imager with DPM
- MC92N0-G8** SE4500 Blockbuster DL imager for driver license
- MC92N0-G9** SE4600 Long Range imager
- MC92N0-GL** SE4750 Megapixel Standard Range imager
- MC92N0-GM** SE4750 Megapixel Medium Range imager
- MC92N0-GP** SE4850 Extended Range imager



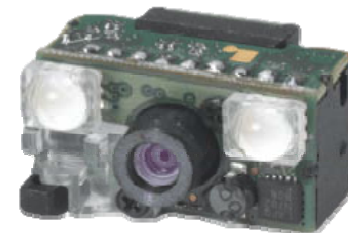
-G5, -G8, -GL and -GM available in Premium models only



**MC92N0-GA**  
SE965 1D  
Standard Range Laser



**MC92N0-GJ**  
SE1524 Lorax 1D  
Long Range Laser



**MC92N0-G3**  
**MC92N0-G5**  
**MC92N0-G8**  
SE4500 2D  
Blockbuster Imager



## MC9200 Keypad Options

### 28 Key Numeric Telephony

Large numeric keys  
Alpha character by SMS system

Spare keypad part number:  
**KYPD-MC9XMR000-01R**



### 43 Key Shifted Alpha

Calculator style numeric  
12 direct function keys

Spare keypad part number:  
**KYPD-MC9XMT000-01R**



### 53 Key Alpha-Numeric

Full alpha-numeric keypad  
10 shifted function keys

Spare keypad part number:  
**KYPD-MC9XMS000-01R**



All replacement keypads are field replaceable and can be changed on site without sending it to service depot.







## MC9200 Keypad Options

### 3270 Emulator Keypad

Full alpha-numeric  
20 shifted function keys

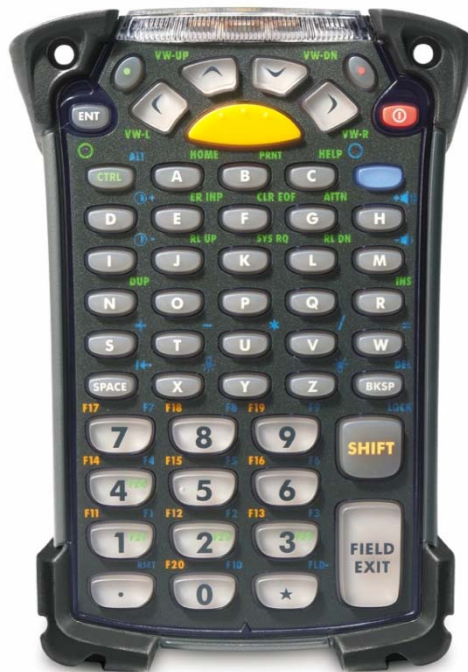
Spare keypad part number:  
**KYPD-MC9XMV000-01R**



### 5250 Emulator Keypad

Full alpha-numeric  
20 shifted function keys

Spare keypad part number:  
**KYPD-MC9XMW000-01R**



### VT Emulator Keypad

Full alpha-numeric  
20 shifted function keys

Spare keypad part number:  
**KYPD-MC9XMU000-01R**



! The emulator keypads are only used when the MC92N0-G is running the respective emulation software, otherwise the functions are same as 53 key keypad.



## MC9200 Operating Systems



Microsoft Windows Embedded  
Handheld 6.5.3 Professional Edition



Microsoft Windows  
Embedded Compact 7.0



Android  
Kit Kat 4.4

## Operating System Configurations

### Microsoft Windows Embedded Handheld 6.5.3 professional edition

- With Microsoft Office (only on premium configurations shipped prior to July 1, 2016)
- Without Microsoft Office

### Microsoft Windows Embedded Compact 7.0

### Android Kit Kat 4.4.0



## MC9200 Additional Features

### Additional Features

- A5** Audio, Voice, Bluetooth
- A6** Audio, Voice, Bluetooth  
Interactive Sensor Technology
- C6** Audio, Voice, Bluetooth,  
Interactive Sensor Technology  
Condensation Resistant



A6 and C6 available in Premium models only

Microphone removed on units manufactured (MFD) after July 1, 2016. Voice support provided via cabled or Bluetooth headset.



Audio



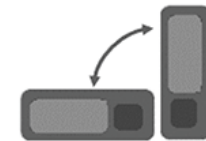
Voice



Bluetooth



Condensation Resistant



Interactive Sensor Technology  
3-axis Accelerometer



# MC9100 MC9200 Accessories Guide







## Step 1: Choose a charging method



### Single Slot Cradle:

**CRD9000-1001SR** Single slot USB / RS232 Cradle, w/spare battery charger. **Requires:** Power Supply PWR-BGA12V50W0WW, DC Line Cord CBL-DC-388A1-01 and Country Specific 3 wire AC Line Cord.

### Single Slot Cradle Kits:

**CRD9000-111SES (INTERNATIONAL)** **Includes:** Single Slot Cradle CRD9000-1001SR, Level VI Power Supply PWR-BGA12V50W0WW and DC Line Cord CBL-DC-388A1-01. Must purchase 3 wire AC Cord separately.

**CRD9000-110SES (US)** **Includes:** Single Slot Cradle CRD9000-1001SR, Level VI Power Supply PWR-BGA12V50W0WW, DC Line Cord CBL-DC-388A1-01, and US AC Cord 23844-00-00R.



The single slot cradle can charge a MC9190-G/MC92N0 gun, charges a spare battery and has USB master and slave connections.

## Additional Accessories for Single Slot Cradle



### 25-64396-01R

USB Cable for the cradle to the host system



### 25-63852-01R

Provides serial communication between the single slot cradle and a host computer.



### PWR-BGA12V50W0WW

Level VI AC/DC Power Supply (Brick, replacement for PWR-14000-148R)

**AC Input:** 100-240V, 2.4A

**DC Output:** 12V, 4.16A, 50W

**Requires:** DC line cord and Country specific grounded AC line cord.



### CBL-DC-388A1-01

DC Line Cord for running the single slot cradles or battery chargers from a single Level VI power supply PWR-BGA12V50W0WW, Level VI replacement for PWR-14000-148R.



### 23844-00-00R

US AC line cord, 7.5 feet long, grounded, three wire for power supplies.



### 25-63856-01R

Modem adapter cable used to connect the MDM9000-100R to the single slot cradle



## Step 1: Choose a charging method



### 4 Slot Cradles:

**CRD9101-4001CR** 4 Slot Charge Only Cradle

**CRD9000-4001ER** 4 Slot Ethernet Cradle

### 4 Slot Cradle Kits:

#### **CRD9101-411CES** (INTERNATIONAL)

**Includes:** 4 Slot Charge Only Cradle CRD9000-4001ER, Level VI Power Supply PWR-BGA12V108W0WW and DC Cord CBL-DC-381A1-01. Must purchase 3 wire AC Cord separately.

#### **CRD9000-411EES** (INTERNATIONAL)

**Includes:** 4 Slot Ethernet Cradle CRD9000-4001ER, Level VI Power Supply PWR-BGA12V108W0WW and DC Cord CBL-DC-381A1-01. Must purchase 3 wire AC Cord separately.

#### **CRD9000-410EES** (US)

**Includes:** 4 Slot Ethernet Cradle CRD9000-4001ER, Level VI Power Supply PWR-BGA12V108W0WW, DC Cord CBL-DC-381A1-01 and US AC Cord 23844-00-00R.

## Additional Accessories for 4-slot Cradles



### **PWR-BGA12V108W0WW**

Level VI AC/DC Power Supply (Brick, Replacement for PWRS-14000-241R)

**AC Input:** 100-240V, 2.8A

**DC Output:** 12V, 9A, 108W

**Requires:** DC line cord and Country specific grounded AC line cord.



### **CBL-DC-381A1-01**

DC Line Cord for running multi-slot cradles from a single Level VI power supply PWR-BGA12V108W0WW, Level VI replacement for PWRS-14000-241R

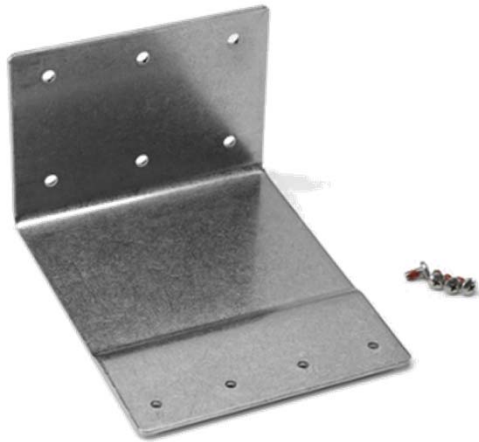


### **23844-00-00R**

US AC line cord, 7.5 feet long, grounded, three wire for power supplies.

## Step 1: Choose a charging method

### Wall Mounting Bracket



#### **KT-61498-01R**

Wall mounting bracket, order one for a single slot cradle on one for the 4 slot battery charger, order two for 4 slot cradles. Must purchase the cradle bracket separately to install the cradle on the wall mount bracket.

### Cradle Bracket



#### **KT-61499-01R**

Cradle Bracket, order one for a single slot cradle and one for the 4 slot battery charger, order two for 4 Slot Cradles. Attaches to the bottom of the cradle and is required to install the cradle on the wall mounting bracket.



## Step 1: Choose a charging method



### Forklift Cradle:

#### FLC9000-1001R

Provides a secure mounting solution, equipped with rugged RS232 and USB ports capable of powering and communicating with tethered devices.

! The forklift cradle allows USB and RS232 connectivity between a docked MC9190-G/MC92N0-G and external devices such as scanners or printer (additional cables required)

### Forklift Cradle Kits:

**KT-FLC9000-LV** Includes Fork Lift Cradle (FLC9000-1001R), Low Voltage Power Converter (PWRS-14000-252R) and Power Cable (25-103873-01R)

**KT-FLC9000-HV** Includes Fork Lift Cradle (FLC9000-1001R), High Voltage Power Converter (PWRS-14000-251R), Power Cable (25-103872-01R)

! Must purchase separately:

- Specific power converter : PWRS-14000-252R for low voltage or PWRS-14000-251R for high voltage
- Power input cable :25-103872-01R

### Additional Accessories for Forklift Cradle



#### PWRS-14000-251R

Fork Lift High Voltage Power Converter from 18-75VDC to 12VDC



#### PWRS-14000-252R

Fork Lift Low Voltage Power Converter from 9-30VDC to 12VDC



#### 25-103872-02R

Forklift power input cable



#### 25-71917-02R

RS232 Cable, coiled 9' extended, rugged amphenol connector.



#### 25-71918-01R

USB Cable, coiled 9' extended, rugged amphenol connector



## Step 2: Choose battery / battery charging accessories

### 2600 mAh Battery



**BTRY-MC9X-26MA-01**  
MC9090, MC9190, MC9200  
PowerPrecision Spare  
Lithium Ion battery, 2600 mAh

Pack of 10 spare batteries is also  
available:  
**(BTRY-MC9X-26MA-10)**

### Spare Battery Charging Options:



**CRD9000-1001SR**  
Single Slot Serial / USB Cable  
with spare battery charging



**SAC9000-4000R**  
4-slot battery charger, charges  
four spare batteries.

### Accessories for 4-slot Battery Charger:



**25-72614-01R**  
DC Line Cord for 4-Slot Battery Charger



**PWRS-14000-242R**  
Power supply for 4-Slot Battery Charger



**23844-00-00R**  
US AC line cord, 7.5 feet long, grounded,  
three wire for power supplies.

### 4-slot Battery Charger Kits:

**SAC9000-400CES** US kit. Includes: 4-slot battery charger SAC9000-4000R, power supply PWRS-14000-242R, DC line cord 25-72614-01R and US AC line cord 23844-00-00R.

**KIT-SAC9000-4001ES** International kit. Includes 4-slot battery charger SAC9000-4000R, power supply PWRS-14000-242R and DC line cord 25-72614-01R, must purchase country specific AC line cord separately.



## Step 3: Choose charging cables/adapters

### Cable Adapter Module



#### ADP9000-100R

(3.3v - 500mAh) provides communication to the host or printer and can be used for AC charging

### Cable options for ADP9000-100R:



**25-62166-01R**  
USB Cable for  
Cable for adapter  
module



**25-62168-01R**

Paxar printer cable  
for adapter module



**25-62167-02R**  
DEX cable for  
adapter module



**25-62169-01R**

O'Neil printer cable  
for adapter module



**25-62167-03R**  
DEX cable w/  
floating jack screws  
for adapter module



**25-62170-02R**

Zebra printer cable  
for adapter module

### Other adapter modules and kits:

**KT-ADP9000-100ES** Includes: ADP9000-100R,  
Level VI Power Supply PWR-  
BGA12V50W0WW, DC Line  
Cord CBL-DC-388A1-01, and  
US AC Cord 23844-00-00R.

**ADP9000-110R** (5VDC - 350mA) for use with long  
range scanner LS3408ER

**ADP9000-120R** (5VDC - 350mA) for use with  
Apriva BT200 Reader



**VCA9002-12R** Auto charge cable 12V  
for adapter module

**VCA9000-24R** Auto charge cable 24V  
for adapter module

## Step 4: Choose carrying accessories

### Holsters



**SG-MC9121112-01R**

Soft material holster for gun configurations only



**SG-MC9027242-01R**

Holster for use with Tethered Cac Solution And Aprivia Bluetooth Bt200

### Heated Boot



**SG-MC9024242-01R**

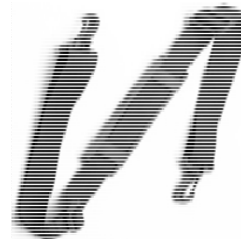
Allows device to be used in Freezer Applications.



Heated Boot requires 4 AA batteries for the heating element, not provided with the unit

**Shoulder strap**  
**58-40000-007R**

Universal shoulder strap for holster.



### Protective Boot



**11-67218-04R**

Protective boot for gun configurations only

**Belt for holster**  
**11-08062-02R**

Universal belt for fabric holster.



## Step 5: Choose other accessories

### Audio

**RCH51** Rugged wired headset designed for use in nearly any environment

**25-124387-02R** RCH51 headset adapter cable to standard 3-pole 2.5mm barrel jack.

### Belt Clip Kit

**KT-70147-01R** Belt clip kit is designed to hold the mobile computers firmly in place while on the move.



## Step 5: Choose other accessories

### Plastic Screen Guards

**KT-151827-03R** Pack of 3 screen guards

**KT-151827-500R** Pack of 500 screen guards

**KIT-MC9X-  
SCRP1L-50** Laminate exit window overlay for use  
in food processing environment-  
Pack of 50



**KT-151827-03R**  
Plastic Screen Guards

### Hand straps

**KT-66447-03R** Replacement hand straps - Pack of 3

**KT-66447-03R**  
Replacement Hand straps



### Stylus Kits

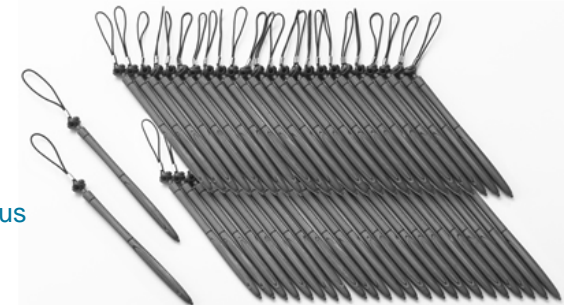
**KT-68144-10R** Replacement grey stylus - Pack of 10

**KT-68144-50R** Replacement grey stylus - Pack of 50



**KT-68144-10R**  
Replacement Grey Stylus

**KT-81680-50R**  
Replacement Grey Stylus  
with tether





## Step 5: Choose 3<sup>rd</sup> Party accessories

These accessories are certified through the Independent Hardware Vendor (IHV) Program, for pricing and ordering inquiries contact the corresponding vendor directly.

### Bluetooth Headsets (for MC9200 only)

**B250XT+** VXi Corp Bluetooth Wireless Headset

**Expressway II** VXi Corp Bluetooth Wireless Headset

### Forklift Ballistic Holster

**Y6911DWSP** Agora Edge, Ballistic Nylon Holster for Forklift, Vehicle or Wall Mounting

### Card Reader (For MC9100 only)

**1139-01-SO-MC9X00-CAC**

TSL Common Access Card (CAC) Reader capable of reading Common Access Cards (CAC) as well as Smart Cards compliant with ISO7816-1,2,3,4.



**B250-XT+**  
Bluetooth Headset for MC9200

Bluetooth Headsets for WBA/VDP use case only



**Expressway II**  
Bluetooth Headset for MC9200



**Y6911DWSP**  
Ballistic Holster for Forklift



**1139-01-SO-MC9X00-CAC**  
TSL Common Access Card reader for MC9100