



Tamper proof Windshield Tag

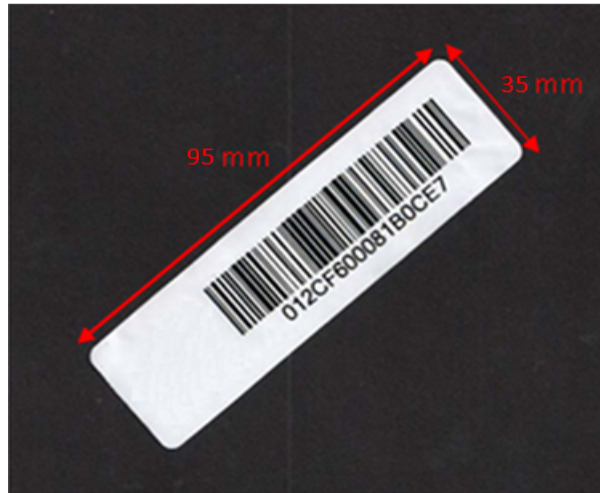
FEATURES

- Windshield tag is a tamper proof tag and can be easily attached with self adhesive tape.
- It is a flexible tag and operates effectively with read range of over 8-10m when attached inside of vehicle's windshield.
- Unique serial number and the associated barcode are printed at the front of the tag to allow automated processing and easy issuing to end-users.

APPLICATIONS

- It can be used in Electronic Toll Collection & transport systems, vehicle identification.
- Factory automation, Automotive & Security purpose.

Chip Type:	EPC Class 1 Gen 2; ISO 18000-6C protocol compliant	
	Alien Higgs 3 having EPC 96 bit extendable up to 480 bit	
	User Memory 512 bit	
	Data retention of 50 years	
	Write endurance of 100,000 cycles	
Mechanical:	Dimension	95 x 35 x 0.3 mm
	Material	PP label
	Color	White
	Weight	0.11 g
Electrical:	Operating Frequency	865 - 868 MHz
	Operating mode	Passive (battery-less transponder)
Ingress Protection:	IP65	
Thermal:	Storage Temp.	-40°C to +100°C
	Operating Temp.	-20°C to +80°C
Part Number:	367V2-1	
Options:	Available with:	
	Other IC type on request	
	Tags are delivered in rolls.	



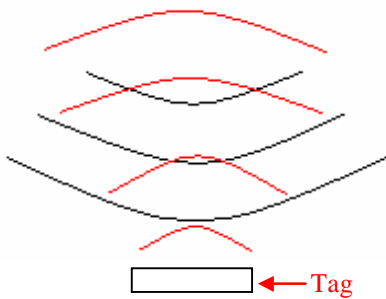
Tag Placement

- ✚ Windshield tag is polarized parallel to the length of the tag.
- ✚ Ensure that there is no hindrance between the tag and the reader antenna.
- ✚ Reader antenna should be parallel to the tag length as shown in below figure:

Correct way



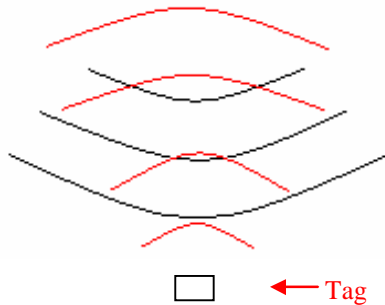
Antenna



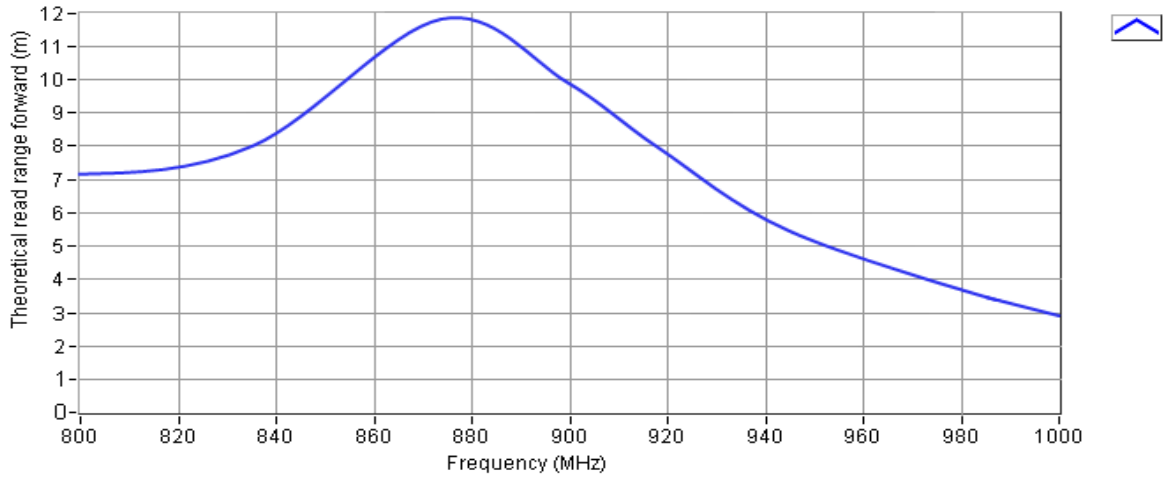
Wrong way



Antenna



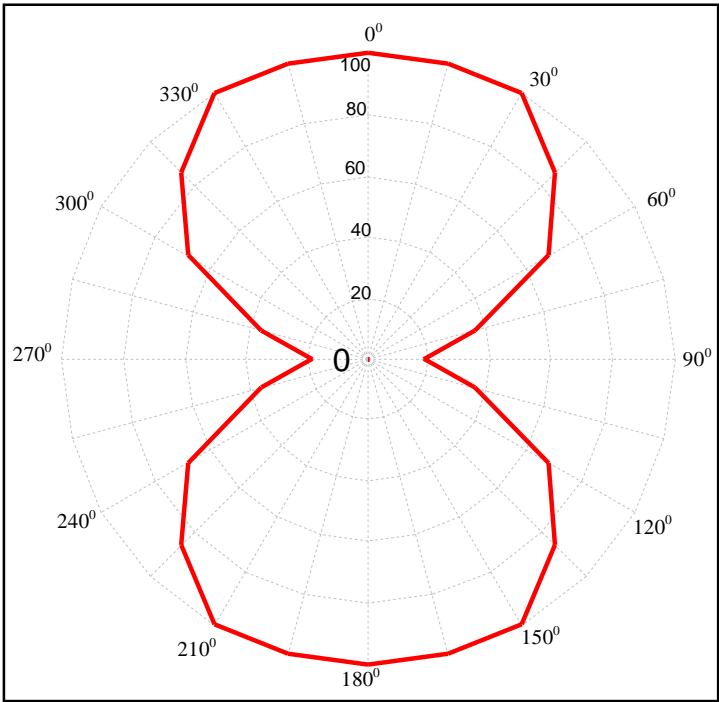
Read Range v/s Frequency



Angular Sensitivity

Tamper proof Windshield Tag Angular Sensitivity

(Relative Read Range vs. Orientation)



Read range (in percent) at various angle.

