

DLT-V83 Series



Fully Configurable, Rugged VMT Series

- Color-TFT 10" or 12"
- Highly break-proven, abrasion-resistant touchscreen
- Largely configurable to needs
- Extreme temperature range, cold store capable
- Fully rugged, IP66 and 5M3 for the complete system

Introduction

DLT-V83 vehicle terminals from Advantech-DLOG are extremely robust, highly configurable and meet a variety of business needs. They incorporate all the features necessary for heavy-duty vehicle applications in warehousing, industry and mining. Using a UPS system, they can bridge an interruption of power supply of several minutes, use CAN-Bus technology for effective vehicle diagnostics and monitoring and are capable of withstanding extreme cold in cold storage warehouses.

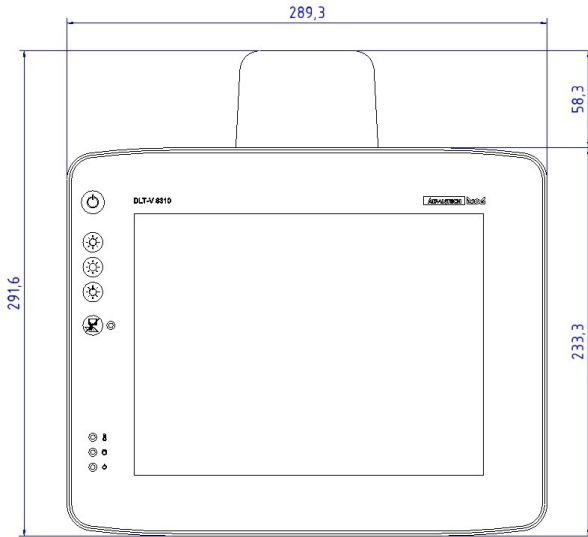
Specification

System	CPU Mass storage memory	Intel® ATOM™ D 525 Dual Core 1.8 GHz with 2 GB RAM or 4 GB RAM 4 GB CFAST or more 2.5" SSD with 64 GB, optional
Housing		Completely sealed, fanless design Coated aluminium
Dimensions/Weight (without antenna)	DLT-V8310 DLT-V8312	Width x height x depth: 289 mm x 233 mm x 88 mm / 4.3 kg Width x height x depth: 328 mm x 263 mm x 93 mm / 5.5 kg
Display	DLT-V8310 DLT-V8312	Color-TFT 10.4", SVGA 800 x 600, 400 cd/m ² Color-TFT 12.1" XGA 1024 x 768, 500 cd/m ²
Touchscreen		Highest impact capable touchscreens in two variants: - Resistive touchscreen with 5 or 26 keys, available with defroster option - Capacitive multi touch (PCT) with 9 integrated keys
Front Keys		5, 9 or 26 front keys
Software	Operating system Emulations (third-party)	MS® WES 2009, WinXP Pro, WES 7, Win7 Pro, Linux VT100, VT220, IBM 5250, TN 3270, Citrix Client®, Freefloat Access One
Communication	Wi-Fi/WWAN LAN WPAN	Wi-Fi IEEE 802.11 a/b/g/n, WWAN (GSM, GPRS, EDGE, UMTS, HSPA), optional Ethernet 10/100/1000 MBit/s, optional 2 nd Ethernet Bluetooth, optional
Location based services		GPS, optional
Interfaces	Serial USB CAN	2 x RS-232, alternatively 1 x RS-232 and RS-422/485 4 x USB 2.0 (HI-SPEED™), bootable; including 1 x Service USB Optional
Audio/Voice	Sound Kit	Speaker integrated Advantech-DLOG specific Voice Kit, optional
Power supply (internal)		12/24/48 VDC nominal voltages Automatic switch-on/switch-off function via vehicle ignition Uninterruptible power supply (typically 10 min), optional
Environmental	IP protection class Operating temperature Shock/Vibration	IP66 for the complete system -30 to +50 °C / -22 to +122 °F Class 5M3 according to EN 60721-3-5 US Highway Truck as MIL-STD 810F
Approvals	Certifications	CE Immunity Class A, Emission Class B / FCC Class B

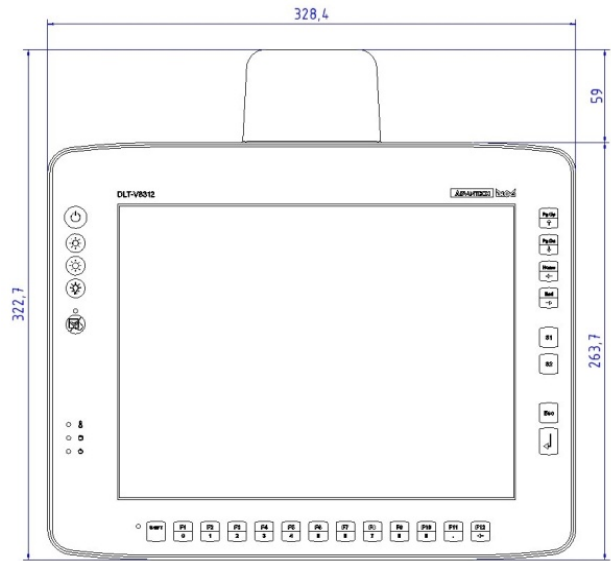
Data sheet V2.20. © by DLOG GmbH 2014. Information is subject to change. Product names are in most cases also registered trademarks and are thus subject to law.

DLT-V83 Series

Dimensions (in mm)

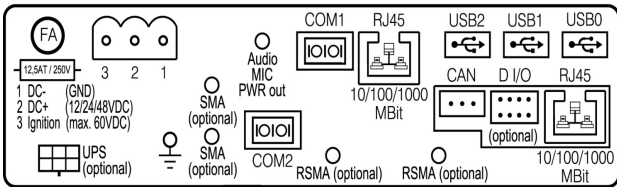


DLT-V8310 (available with 5 or 26 Front Keys)

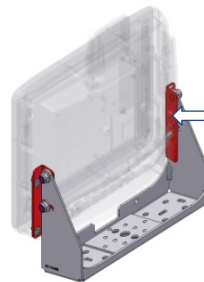
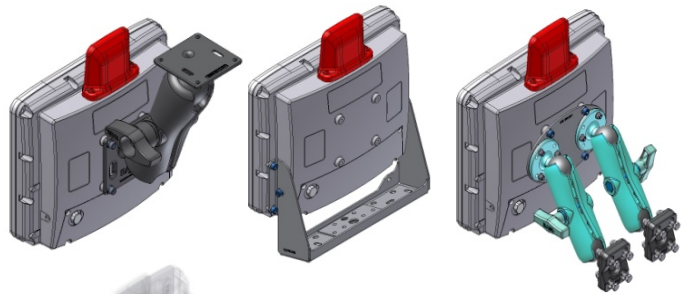


DLT-V8312 (available with 5 or 26 Front Keys)

Connectors



Mounting Variants (Selection)



Adapter set for reusing the mounting bracket of the predecessor terminal MPC 6/10.

Advantech-DLoG Partner Contact

Accessories/Options

- Scanners and scanner mountings
- Keyboards and keyboard mountings
- Terminal mountings (wide range of mounting brackets, RAM solutions etc.)
- USB Stick, USB Recovery Stick
- External CD/DVD ROM drive