

# DLT-V8310/12



## Fully Configurable VMT Series, Rugged

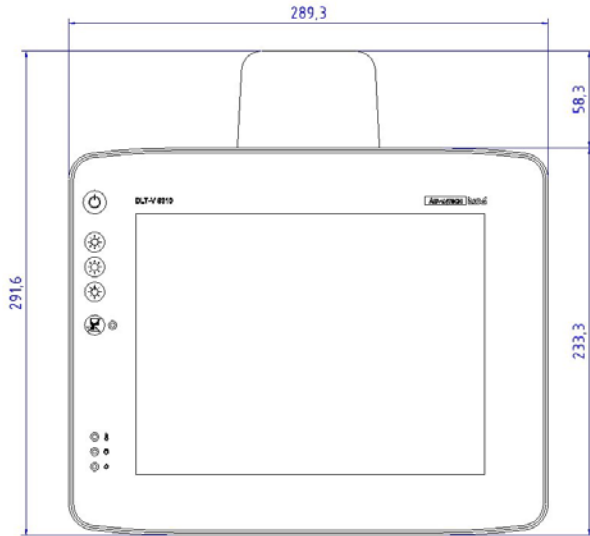
- Color-TFT 10" or 12"
- Fully configurable to support individual needs
- Break-proven, abrasion-resistant touchscreen, IK08
- Integrated uninterruptible power supply (UPS)
- Extreme temperature range, cold store capable
- Fully rugged, IP66 and 5M3 for the complete system

## Specification

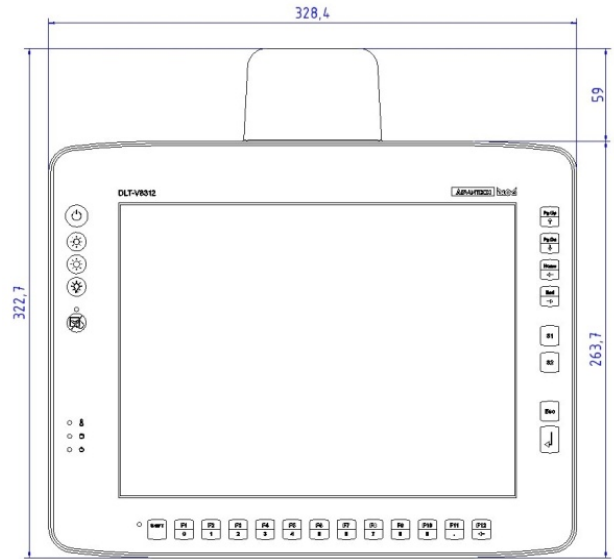
System	CPU Mass storage memory	Intel® ATOM™ D 525 Dual Core 1.8 GHz with 2 GB RAM or 4 GB RAM 4 GB CFast or more 2.5" SSD with 128 GB, optional
Housing		Completely sealed, fanless design Coated aluminium
Dimensions/Weight (without antenna)	DLT-V8310 DLT-V8312 DLT-V8310	Width x height x depth: 289 mm x 233 mm x 88 mm / 4.3 kg Width x height x depth: 328 mm x 263 mm x 93 mm / 5.5 kg
Display	DLT-V8310 DLT-V8312	Color-TFT 10.4", SVGA 800 x 600, 400 cd/m <sup>2</sup> Color-TFT 10.4" XGA 1024 x 768, 400 cd/m <sup>2</sup> Color-TFT 12.1" XGA 1024 x 768, 500 cd/m <sup>2</sup>
Screen defroster	DLT-V8310 and DLT-V8312	Screen defroster (optional) for devices with 26 front keys and resistive touchscreen
Touchscreen		Highest impact capable touchscreens in two variants: - Resistive touchscreen with 5 or 26 keys - Capacitive multi touch (PCT) with 9 integrated keys
Front keys		5, 9 or 26 front keys
Software	Operating system Emulations (third-party)	MS® WE8S, WE 8.1 Ind Pro, WES 2009, WinXP Pro, WES 7, Win7 Pro, Linux VT100, VT220, IBM 5250, TN 3270, Citrix Client®, Freefloat Access One
Communication	Wi-Fi WWAN LAN WPAN	Wi-Fi IEEE 802.11 a/b/g/n, optional WWAN (GSM, GPRS, EDGE, UMTS, HSPA), optional Ethernet 10/100/1000 MBit/s, optional 2 <sup>nd</sup> Ethernet Bluetooth, optional
Location based services		GPS, optional
Interfaces	Serial USB CAN	2 x RS-232, alternatively 1 x RS-232 and RS-422/485 4 x USB 2.0 (HI-SPEED™), bootable; including 1 x Service USB Optional
Audio/Voice	Sound Kit	Speaker integrated Advantech-DLoG specific Voice Kit, optional
Power supply (internal)		12/24/48 VDC nominal voltages Automatic switch-on/switch-off function via vehicle ignition Uninterruptible power supply (UPS), typically 10 min, optional
Environmental	IP protection class Impact resistance of the front Operating temperature Relative humidity Shock/Vibration	IP66 for the complete system IK08 according to IEC 62262 -30 to +50 °C (-22 to +122 °F) 10 to 90% at 40 °C, non condensing Class 5M3 according to EN 60721-3-5 and US Highway Truck as MIL-STD 810F
Approvals	Certifications	CE Immunity Class A, Emission Class B / FCC Class B, CCC China, TELEC Japan

# DLT-V8310/12

## Dimensions (in mm)

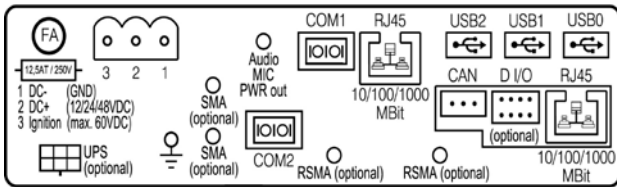


DLT-V8310 (available with 5 or 26 Front Keys)

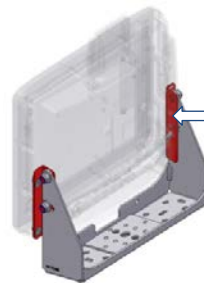
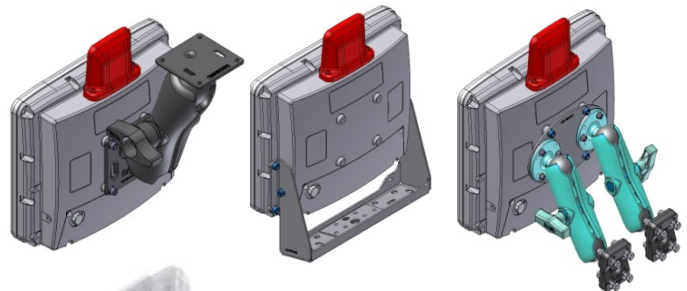


DLT-V8312 (available with 5 or 26 Front Keys)

## Connectors



## Mounting Variants (Selection)



Adapter set for reusing the mounting bracket of the predecessor terminal MPC 6/10.

## Advantech-DLoG Partner Contact

## Accessories/Options

- Scanners and scanner mountings
- Keyboards and keyboard mountings
- Sun visors
- Terminal mountings (wide range of mounting brackets, RAM solutions etc.)
- USB Stick, USB Recovery Stick
- External CD/DVD ROM drive