

GRYPHON™ 4500-HC 2D SERIES



THE PURPOSE OF BAR CODE READERS IN THE HEALTHCARE INDUSTRY

The key mission of scanners in the healthcare industry is to improve the quality of patient care while reducing medication errors. Additionally, healthcare environments have requirements that scanners need to be regularly cleaned and disinfected. The Datalogic Gryphon™ HC product series is specifically developed for healthcare applications with Disinfectant-Ready enclosures treated with anti-microbial additives and are designed to withstand daily cleaning with harsh disinfectant solutions.

The Gryphon 4500-HC 2D readers can decode virtually any 1D and 2D bar code symbology and can read codes from LCD monitors, cell phones, smartphones and other mobile devices. High Density (HD) models are also available for reading smaller, condensed codes.

Ideally suited for stationary applications in administration, laboratory and hospital environments, the GD4500-HC 2D desktop model offers an affordable corded solution, while the GM4500-HC 2D or GBT4500-HC 2D cordless models (STAR or Bluetooth®) provide extended mobility for cordless operations.

Datalogic distinctive reading technology with highly visible white-illumination is easier on the human eyes and reads colored labels better. The highly visible 4-Dot aimer provides a clear indication of the reading area, making targeting codes quick and easy. Datalogic's patented 'Green Spot' technology provides additional visual good-read confirmation which is ideal for quiet environments like bedside patient care.

One of the most important technical innovations that the Gryphon 4500 wireless readers achieve is the wireless charging system for the battery, which enhances the reliability of the entire solution, while lowering the total cost of ownership (no need for contact cleaning or maintenance procedures).

ALL PRODUCTS

- Disinfectant-Ready enclosures treated with anti-microbial additives (ISO22196 and JISZ 2801 compliant models available)
- Motionix™ motion-sensing technology for seamless reading mode transitions
- Omnidirectional reading of 1D, 2D and postal codes plus stacked and composite codes
- Extremely snappy reading performance
- Extended reading distances and improved capability of reading small, condensed, curved, poorly printed, and reflective bar codes
- Advanced motion tolerance optics
- Highly visible 4-Dot aimer with center cross for targeted scanning
- Image capture and document scanning capabilities
- Datalogic's patented 'Green Spot' technology and exclusive 3GL™ (3 Green Lights) for superior good-read feedback
- USB Certified Kits Available
- ISO22196 Compliant Models Available

Wireless Models

- Choice of Bluetooth wireless technology version 4.0 with BLE or Datalogic's STAR Cordless System (radio frequencies available in 433 MHz or 910 MHz)
- Datalogic's distinctive Wireless Battery Charging System
- Adjustable position cradle with Scan-While-Charging capability
- Batch Mode capability
- Point-to-point / Point-to-multi-point transmission
- Long lasting user-replaceable Lithium-Ion battery
- Vibration feedback



MEDITECH



GRYPHON™ 4500-HC 2D SERIES

TECHNICAL SPECIFICATIONS

DECODING CAPABILITY

1D / linear codes	Autodiscriminates all standard 1D codes including GS1 DataBar™ linear codes.
2D codes	Aztec Code; China Han Xin Code; Data Matrix; MaxiCode; Micro QR Code; QR Code
Postal codes	Australian Post; British Post; China Post; IMB; Japanese Post; KIX Post; Planet Code; Postnet; Royal Mail Code (RM4SCC)
Stacked codes	EAN/JAN Composites; GS1 DataBar Composites; GS1 DataBar Expanded Stacked; GS1 DataBar Stacked; GS1 DataBar Stacked Omnidirectional; MacroPDF; MicroPDF417; PDF417; UPC A/E Composites

ELECTRICAL

Current	Operating: <300 mA @ 5V; < 200 mA @ 12V Standby/Idle: < 90 mA @ 5V; <50 mA @ 12V
Input voltage	GD4520: 5 VDC GD4590: 4.5 - 14.0 VDC

ENVIRONMENTAL

Ambient light	0 - 100,000 lux
Drop resistance	Withstands repeated drops from 1.8 m / 6.0 ft onto a concrete surface.
ESD Protection (Air Discharge)	16 kV
Humidity (Non-Condensing)	0 - 95%
Particulate and Water Sealing	IP52
Temperature	Operating: 0 to 50 °C / 32 to 122 °F Storage/Transport: -40 to 70 °C / -40 to 158 °F

INTERFACES

Interfaces	GD4520: USB only GD4590: RS-232 / USB / Keyboard Wedge Multi-Interface
-------------------	---

PHYSICAL CHARACTERISTICS

Colors Available	Light Green/Light Grey (Rubber/Plastic)
Dimensions	16.6 x 6.8 x 10.9 cm / 6.5 x 2.7 x 4.3 in
Weight	161.0 g / 5.7 oz

DATALOGIC DISINFECTANT-READY ENCLOSURES FOR HEALTHCARE

Datalogic offers bar code readers designed specifically for the healthcare industry with Disinfectant-Ready enclosures treated with anti-microbial additives that can help fight against the spreading of germs. This is particularly important if the scanner is traveling room-to-room on a medication cart with a nurse. The Disinfectant-Ready enclosures can withstand daily cleaning with harsh chemical cleaning solutions commonly used in a healthcare environment.



REFER TO THE DEVICE INSTRUCTION MANUAL FOR PROPER CLEANING METHODS WHEN USING THESE CHEMICALS. DISINFECTANTS SHOULD NOT BE SPRAYED OR POURED ONTO THE SCANNER UNIT. THE SCANNERS MUST ALWAYS BE WIPED DRY AFTER DISINFECTING.

READING PERFORMANCE

Image Capture	Graphic Formats: BMP, JPEG, TIFF; Greyscale: 256, 16, 2
Image Sensor	1 Megapixel: 1280 x 800 pixels
Light source	Aiming: Red Laser 650 nm Illumination: Warm White; Hyper Red LED for Digimarc
Motion tolerance	35 IPS
Print contrast ratio (minimum)	15%
Reading angle	Pitch: +/- 65°; Roll (Tilt): 360°; Skew (Yaw): +/- 65°
Reading indicators	Beeper (Adjustable Tone); Datalogic Three Green Lights (3GL) Good Read Feedback; Datalogic 'Green Spot' on the Code, Dual Good Read LEDs
Resolution (maximum)	High Density (HD): 1D Linear: 0.077 mm / 3 mils; PDF417: 0.077 mm / 3 mils; Data Matrix: 0.102 mm / 4 mils Standard Range (SR): 1D Linear: 0.102 mm / 4 mils; PDF417: 0.127 mm / 5 mils; Data Matrix: 0.195 mm / 7.5 mils

READING RANGES

Typical depth of field	Minimum distance determined by symbol length and scan angle. Printing resolution, contrast, and ambient light dependent.
-------------------------------	--

GD4500 Standard Range (SR)	GD4500 High Density (HD)
Code 39: 5 mils: 7.0 to 38.0 cm / 2.7 to 14.9 in	Code 39: 3 mils: 5.0 to 15.0 cm / 2.0 to 5.9 in
Code 39: 10 mils: 2.2 to 58.0 cm / 0.8 to 22.8 in	Code 39: 5 mils: 0.5 to 25.0 cm / 0.2 to 9.8 in
Data Matrix: 10 mils: 5.5 to 27.0 cm / 2.2 to 10.6 in	Data Matrix: 5 mils: 5.5 to 9.0 cm / 2.2 to 3.5 in
Data Matrix: 15 mils: 2.8 to 41.0 cm / 1.1 to 16.1 in	Data Matrix: 10 mils: 2.0 to 27.0 cm / 0.8 to 10.6 in
EAN-13: 13 mils: 1.0 to 71.0 cm / 0.4 to 27.9 in	EAN-13: 7.5 mils: 2.0 to 23.5 cm / 0.8 to 9.3 in
PDF417: 10 mils: 2.5 to 41.0 cm / 1.0 to 16.1 in	EAN-13: 13 mils: 1.0 to 40.0 cm / 0.4 to 15.7 in
QR Code: 10 mils: 5.5 to 24.0 cm / 2.2 to 9.5 in	PDF417: 4 mils: 3.0 to 12.0 cm / 1.2 to 4.7 in
	PDF417: 10 mils: 0.5 to 31.0 cm / 0.2 to 12.2 in
	QR Code: 10 mils: 2.0 to 25.0 cm / 0.8 to 9.8 in

SAFETY & REGULATORY

Agency Approvals	The product meets necessary safety and regulatory approvals for its intended use. The Quick Reference Guide for this product can be referred to for a complete list of certifications.
Environmental Compliance	Complies to China RoHS; Complies to EU RoHS
Laser Classification	Caution Laser Radiation - Do not stare into beam; IEC 60825 Class 2

UTILITIES

Datalogic Aladdin™	Datalogic Aladdin configuration program is available for download at no charge.
OPOS JavaPOS	JavaPOS and OPOS Utilities are available for download at no charge.
Remote Host Download	Lowers service costs and improves operations

WARRANTY

Warranty	5-Year Factory Warranty
-----------------	-------------------------

PRODUCT CHEMICAL CONTENT

Sani-Cloth® HB, Sani-Cloth® Plus, Super Sani-Cloth®	Quaternary Ammonium Chloride solution
Hepacide Quat II	Virucidal disinfectant cleaner
Alcohol Wipes	70% Isopropyl Alcohol
CaviWipes™	Isopropanol 10-20%; Ethylene Glycol Monobutyl Ether 1-5%
Virex® 256	n-Alkyl Dimethyl Benzyl Ammonium Chloride; Didecyl Dimethyl Ammonium Chloride
409® Glass and Surface Cleaner	n-Alkyl Dimethyl Benzyl Ammonium Chloride; n-Propoxypropanol
Windex® Blue	Isopropyl Alcohol
Clorox® Bleach	Sodium Hypochlorite; Sodium Hydroxide
100% Gentle dish soap and water	

GRYPHON™ 4500-HC 2D SERIES

TECHNICAL SPECIFICATIONS

CORDLESS COMMUNICATIONS

Datalogic STAR Cordless System™

Effective Radiated Power: 433.92 MHz: < 6.3 mW; 910 MHz: < 50 mW
Multi-Point Configuration: Max. Readers per Radio Receiver: 16; Point-to-Point Configuration; Radio Frequency: 433.92 MHz; 910 MHz; Two Way Communications
Radio Range (Open Air): 50.0 m / 164.0 ft; Range distances are measured using the base station.

DECODING CAPABILITY

1D / linear codes

Autodiscriminates all standard 1D codes including GS1 DataBar™ linear codes.

2D codes

Aztec Code; China Han Xin Code; Data Matrix; MaxiCode; Micro QR Code; QR Code

Postal codes

Australian Post; British Post; China Post; IMB; Japanese Post; KIX Post; Planet Code; Postnet; Royal Mail Code (RM4SCC)

Stacked codes

GS1 DataBar Expanded Stacked; GS1 DataBar Stacked; GS1 DataBar Stacked Omnidirectional; MacroPDF; MicroPDF417; PDF417; UPC A/E Composites

ELECTRICAL

Battery

Battery Type: Lithium-Ion: 3250 mAh
Charge Time: External Power: 4 Hours @ 12 VDC;
Reads per Charge: 80,000

Cradle Indicator LEDs

Battery Charging (flashing orange); Charge Completed (steady green)

Current

Charging (Typical): < 6 W;
Scanner only: 330 mA @ 3.7 V (Operative)
Cradle Only: 80 mA @ 5 V (Operative)

Input voltage

4.5 - 14 VDC +/- 5%

ENVIRONMENTAL

Ambient light

0 - 100,000 lux

Drop resistance

Withstands repeated drops from 1.8 m / 6.0 ft onto a concrete surface.

ESD Protection (Air Discharge)

16 kV

Humidity (Non-Condensing)

0 - 95%

Particulate and Water Sealing

IP52

Temperature

Operating: 0 to 50 °C / 32 to 122 °F
Storage/Transport: -40 to 70 °C / -40 to 158 °F

INTERFACES

Interfaces

RS-232 / USB / Keyboard Wedge Multi-Interface

PHYSICAL CHARACTERISTICS

Colors Available

Light Green/Light Grey (Rubber/Plastic)

Dimensions

16.6 x 6.8 x 10.9 cm / 6.5 x 2.7 x 4.3 in

Weight

235 g / 8.29 oz

Enclosure

Disinfectant-Ready Enclosure Treated with Anti-Microbial Additives (ISO22196 and JISZ 2801 compliant models available)

READING PERFORMANCE

Image Capture

Graphic Formats: BMP, JPEG, TIFF;
Greyscale: 256, 16, 2

Image Sensor

1 Megapixel: 1280 x 800 pixels

Light source

Aiming: Red Laser 650 nm
Illumination: Warm White;

Motion tolerance

35 IPS

Print contrast ratio (minimum)

15%

Reading angle

Pitch: +/- 65°; Roll (Tilt): 360°; Skew (Yaw): +/- 65°

Reading indicators

Beeper (adjustable tone); Vibration feedback option available for quiet places; Datalogic Three Green Lights (3GL) Good Read Feedback; Datalogic 'Green Spot' on the Code, Dual Good Read LEDs

Resolution (maximum)

High Density (HD): 1D Linear: 0.077 mm / 3 mils;
PDF417: 0.077 mm / 3 mils;
Data Matrix: 0.102 mm / 4 mils
Standard Range (SR): 1D Linear: 0.102 mm / 4 mils;
PDF417: 0.127 mm / 5 mils;
Data Matrix: 0.195 mm / 7.5 mils

READING RANGES

Typical depth of field

Minimum distance determined by symbol length and scan angle.
Printing resolution, contrast, and ambient light dependent.

GD4500 Standard Range (SR)

Code 39: 5 mils: 7.0 to 38.0 cm / 2.7 to 14.9 in

Code 39: 10 mils: 2.2 to 58.0 cm / 0.8 to 22.8 in

Data Matrix: 10 mils: 5.5 to 27.0 cm / 2.2 to 10.6 in

Data Matrix: 15 mils: 2.8 to 41.0 cm / 1.1 to 16.1 in

EAN-13: 13 mils: 1.0 to 71.0 cm / 0.4 to 27.9 in

PDF417: 10 mils: 2.5 to 41.0 cm / 1.0 to 16.1 in

QR Code: 10 mils: 5.5 to 24.0 cm / 2.2 to 9.5 in

SAFETY & REGULATORY

Agency Approvals

The product meets necessary safety and regulatory approvals for its intended use.
The Quick Reference Guide for this product can be referred to for a complete list of certifications.

Environmental Compliance

Complies to China RoHS; Complies to EU RoHS

Laser Classification

Caution Laser Radiation - Do not stare into beam; IEC 60825 Class 2

UTILITIES

Datalogic Aladdin™

Datalogic Aladdin configuration program is available for download at no charge.

OPOS JavaPOS

JavaPOS and OPOS Utilities are available for download at no charge.

Remote Host Download

Lowers service costs and improves operations

WARRANTY

Warranty

3-Year Factory Warranty

GRYPHON™ 4500-HC 2D SERIES

TECHNICAL SPECIFICATIONS

CORDLESS COMMUNICATIONS

Bluetooth Wireless Technology

Piconet: Max. Readers per Radio Receiver: 7
 Profiles: SPP (Serial Port Profile)
 Protocol: Bluetooth 4.0 with BLE Certified Class 1, Class 2 and Class 3; Radio Frequency: 2.4 GHz
 Radio Range (Open Air): 100.0 m / 328.0 ft; Range distances are measured using the base station. Range with connection to other Bluetooth peripherals may show different results.
 Security: Data Encryption; Scanner Authentication

DECODING CAPABILITY

1D / linear codes	Autodiscriminates all standard 1D codes including GS1 DataBar™ linear codes.
2D codes	Aztec Code; China Han Xin Code; Data Matrix; MaxiCode; Micro QR Code; QR Code
Postal codes	Australian Post; British Post; China Post; IMB; Japanese Post; KIX Post; Planet Code; Postnet; Royal Mail Code (RM4SCC)
Stacked codes	EAN/JAN Composites; GS1 DataBar Composites; GS1 DataBar Expanded Stacked; GS1 DataBar Stacked; GS1 DataBar Stacked Omnidirectional; MacroPDF; MicroPDF417; PDF417; UPC A/E Composites

ELECTRICAL

Battery	Battery Type: Lithium-Ion: 3250 mAh Charge Time: External Power: 4 Hours @ 12 VDC; Reads per Charge: 80,000
Cradle Indicator LEDs	Battery Charging (flashing orange); Charge Completed (steady green)
Current	Charging (Typical): < 6 W; Gun Only: 330 mA @ 3.7 V (Operative) Cradle Only: 80 mA @ 5 V (Operative)
Input voltage	4.5 - 14 VDC +/- 5%

ENVIRONMENTAL

Ambient light	0 - 100,000 lux
Drop resistance	Withstands repeated drops from 1.8 m / 6.0 ft onto a concrete surface.
ESD Protection (Air Discharge)	16 kV
Humidity (Non-Condensing)	0 - 95%
Particulate and Water Sealing	IP52
Temperature	Operating: 0 to 50 °C / 32 to 122 °F Storage/Transport: -40 to 70 °C / -40 to 158 °F

INTERFACES

Interfaces	RS-232 / USB / Keyboard Wedge Multi-Interface
-------------------	---

PHYSICAL CHARACTERISTICS

Colors Available	Light Green/Light Grey (Rubber/Plastic)
Dimensions	16.6 x 6.8 x 10.9 cm / 6.5 x 2.7 x 4.3 in
Weight	235 g / 8.29 oz
Enclosure	Disinfectant-Ready Enclosure Treated with Anti-Microbial Additives (ISO22196 and JISZ 2801 compliant models available)

READING PERFORMANCE

Image Capture	Graphic Formats: BMP, JPEG, TIFF; Greyscale: 256, 16, 2
Image Sensor	1 Megapixel: 1280 x 800 pixels
Light source	Aiming: Red Laser 650 nm Illumination: Warm White;
Motion tolerance	35 IPS
Print contrast ratio (minimum)	15%
Reading angle	Pitch: +/- 65°; Roll (Tilt): 360°; Skew (Yaw): +/- 65°
Reading indicators	Beeper (adjustable tone); Vibration feedback option available for quiet places; Datalogic Three Green Lights (3GL) Good Read Feedback; Datalogic 'Green Spot' on the Code, Dual Good Read LEDs
Resolution (maximum)	High Density (HD): 1D Linear: 0.077 mm / 3 mils; PDF417: 0.077 mm / 3 mils; Data Matrix: 0.102 mm / 4 mils Standard Range (SR): 1D Linear: 0.102 mm / 4 mils; PDF417: 0.127 mm / 5 mils; Data Matrix: 0.195 mm / 7.5 mils

READING RANGES

Typical depth of field	Minimum distance determined by symbol length and scan angle. Printing resolution, contrast, and ambient light dependent.
-------------------------------	--

GD4500 Standard Range (SR)

Code 39: 5 mils: 7.0 to 38.0 cm / 2.7 to 14.9 in
 Code 39: 10 mils: 2.2 to 58.0 cm / 0.8 to 22.8 in
 Data Matrix: 10 mils: 5.5 to 27.0 cm / 2.2 to 10.6 in
 Data Matrix: 15 mils: 2.8 to 41.0 cm / 1.1 to 16.1 in
 EAN-13: 13 mils: 1.0 to 71.0 cm / 0.4 to 27.9 in
 PDF417: 10 mils: 2.5 to 41.0 cm / 1.0 to 16.1 in
 QR Code: 10 mils: 5.5 to 24.0 cm / 2.2 to 9.5 in

GD4500 High Density (HD)

Code 39: 3 mils: 5.0 to 15.0 cm / 2.0 to 5.9 in
 Code 39: 5 mils: 0.5 to 25.0 cm / 0.2 to 9.8 in
 Data Matrix: 5 mils: 5.5 to 9.0 cm / 2.2 to 3.5 in 10.6 in
 Data Matrix: 10 mils: 2.0 to 27.0 cm / 0.8 to 10.6 in
 EAN-13: 7.5 mils: 2.0 to 23.5 cm / 0.8 to 9.3 in
 EAN-13: 13 mils: 1.0 to 40.0 cm / 0.4 to 15.7 in
 PDF417: 4 mils: 3.0 to 12.0 cm / 1.2 to 4.7 in
 PDF417: 10 mils: 0.5 to 31.0 cm / 0.2 to 12.2 in
 QR Code: 10 mils: 2.0 to 25.0 cm / 0.8 to 9.8 in

SAFETY & REGULATORY

Agency Approvals	The product meets necessary safety and regulatory approvals for its intended use. The Quick Reference Guide for this product can be referred to for a complete list of certifications.
Environmental Compliance	Complies to China RoHS; Complies to EU RoHS
Laser Classification	Caution Laser Radiation - Do not stare into beam; IEC 60825 Class 2

UTILITIES

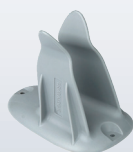
Datalogic Aladdin™	Datalogic Aladdin configuration program is available for download at no charge.
OPOS JavaPOS	JavaPOS and OPOS Utilities are available for download at no charge.
Remote Host Download	Lowers service costs and improves operations

WARRANTY

Warranty	3-Year Factory Warranty
-----------------	-------------------------

ACCESSORIES

Mount / Stands



• 11-0362:
Holder, Multi-Purpose, Grey



• HLD-G041-WH
Desk/Wall Holder, G041, White

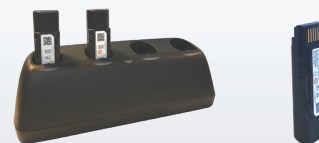


• STD-G041-WH
Basic Stand, G041, White

Cordless Products

Battery/Battery Charger

- MC-GM45 Battery Charger, 4-Slot
- RBP-GM45 Removable Battery Pack



Base Stations/Chargers

- WLC4090-HC-BT Base station; Wireless Charger; Multi-Interface; HC; Bluetooth
- WLC4090-HC-433 Base station; Wireless Charger; Multi-Interface; HC; 433 MHz
- WLC4090-HC-910 Base station; Wireless Charger; Multi-Interface; HC; 910 MHz

