

Getac

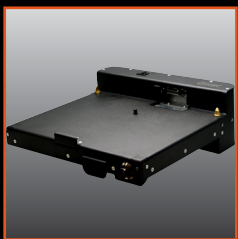
Rugged Mobile Computing Solutions

B300

Fully Rugged Notebook



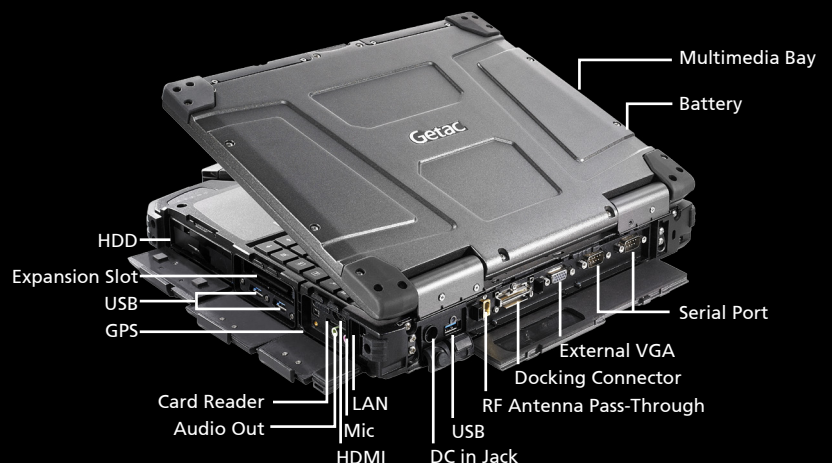
- 6th Generation Intel® Core™ i7/i5 vPro™ Processor
- 13.3 " Getac QuadraClear® Sunlight Readable Display up to 1400 Nits
- Up to 30 Hours of Battery Life with Dual Battery System
- Enhanced Enterprise Security with optional Intel vPro, Windows Disk Encryption, TPM 2.0 and many more multi-factor authentication options
- Extreme ruggedness with 4ft operating drop rating, vibration and sand resistant and operating temperatures of -29°C to 60°C



Vehicle Dock



Office Dock





B300 Notebook

ALL PURPOSE 13.3" FULLY RUGGED NOTEBOOK

Our most popular model, the B300 rugged notebook has been called "The Best Rugged Laptop on the Market". With state-of-the-art processors, incredible battery life and one of the brightest displays in the industry, the 5th generation B300 is the go-to ruggedised notebook for users that work in some of the most extreme conditions on the planet.

Customised Off-The-Shelf

The fact that we own our design and manufacturing process means that Getac can customise units to almost any configuration if the customer requires but we have two standard configurations of the B300 that should meet the majority of end users needs.

B300 BASIC MODEL (See back page for spec)

For the facility based mobile worker

The standard basic model of the B300 is designed for the mobile worker who needs the longer working day offered by the dual-battery and fully rugged credentials of the B300 but, perhaps being based indoors, does not require an ultrabright sunlight readable display.

With a range of accessories available as well as industry leading warranty, service and support options, this can be a complete mobile computing solution.

B300 PREMIUM MODEL (See back page for spec)

For the on-the-road mobile worker

The standard premium model of the B300 is designed for the mobile worker who needs the extra brightness of Getac's sunlight readable technology. With optional dedicated GPS and 4G/LTE, as well as Bluetooth® and tri-pass-through dock connection, this is the choice of workers who need to be connected wherever they are. Getac's own innovative antenna technology and the ability to connect to a vehicles high-gain antenna ensure a maximum of signal strength and a minimum of coverage dropouts.

Docking Stations**

SKU / Part Number	Short Description	Antenna	Specifications (H x W x D)	USB 3.0	Ext. VGA	LAN	Serial	Audio I/O	DC in Jack
GDVNG6	Gamber Johnson Docking Station with Replication Inc car charger (11-16V, 22-32V)	No	124.5 x 315 x 312.5 2.36kg	4	1	1	2	1 Each	1
GDVPG6	Gamber Johnson Docking Station with Replication & Dual Pass Through Inc car charger (11-16V, 22-32V)	Dual RF (TNC)		4	1	1	2	1 Each	1
GDOFK2	Office Dock with AC adapter	No	94 x 330 x 124.5 mm	4	1	1	2	1 Each	1

Passive Cradles*

SKU / Part Number	Short Description	Specifications (H x W x D)
GDVMG6	Gamber Johnson cradle with screen support	124.5 x 315 x 312.5 mm / 2.36kg

ACCESSORIES

Power Accessories

SKU / Part Number	Short Description
GBM9X1	9-Cell Main Battery
GAA9K1	AC Adapter with Power Cord
GC5CK1	External Dual Bay Main+ Second Battery Charger
GAD2X1	Getac 11-16V, 22-32V DC Vehicle Adapter
GAAFK3	MIL-STD-461F AC adapter
GB59X1	Removable Media Bay Battery Pack
GAD3L1	Lind 12-16Vdc input Power Adapter
GAD4L1	Lind 12-32Vdc input Power Adapter
592GUK000030	Lind AC/DC Adapter



Power Accessories



Battery Charger

General Accessories & Carrying Solutions

SKU / Part Number	Short Description
GMPSX1	Stylus Pen and tether for Touch Screen
GSH5X3	Spare 500GB HDD with canister
GSS1X1	Spare 128GB SSD with canister
GSS2X1	Spare 256GB SSD with canister
GSR5X1	Removable Media Bay 500GB HDD
GSR1X1	Removable Media Bay 128GB SSD
GSR2X1	Removable Media Bay 256GB SSD
GMPFX1	Protection Film
GMBCX1	Carry Bag
GSROX3	Removable Super Multi DVD integrated Smart Card for media bay



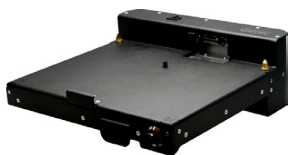
Stylus



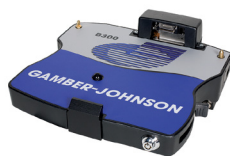
Carry Bags



Batteries



Havis Vehicle Docks



Gamber Johnson Vehicle Dock



Office Dock



Vehicle Power Adapters

All specifications and descriptions are subject to change. Please confirm full description and specification when placing orders.

* All cradles are supplied without power supplies

** All Docking Stations are supplied without power supplies

Email: sales-getac-UK@getac.com

B300 Fully Rugged Notebook

Getac recommends Windows.



Specifications

Operating System	Windows 10 Professional Windows 7 Professional	I/O Interface	Serial port (9-pin; D-sub) x 2 External VGA (15-pin; D-sub) x 1 Microphone (Mini-jack) x 1 Audio output (Mini-jack) x 1 DC in Jack x 1 USB 3.0 (9-pin) x 1 LAN (RJ45) x 1 HDMI x 1 External GPS antenna port (only with optional GPS) x 1 Docking connector (80-pin) x 1 Optional RF antenna pass-through for GPS and WWAN
Mobile Computing Platform	Intel® Core™ i7 Technology Intel® Core™ i7-6500U Processor 2.5GHz (Max. 3.1GHz with Intel® Turbo Boost Technology) - 4MB Intel® Smart Cache Intel® Core™ i7 vPro™ Technology Intel® Core™ i7-6600U vPro™ Processor 2.6GHz (Max. 3.4GHz with Intel® Turbo Boost Technology) - 4MB Intel® Smart Cache Intel® Core™ i5 Technology Intel® Core™ i5-6200U Processor 2.3GHz (Max. 2.8GHz with Intel® Turbo Boost Technology) - 3MB Intel® Smart Cache Intel® Core™ i5 vPro™ Technology Intel® Core™ i5-6300U vPro™ Processor 2.4GHz (Max. 3.0GHz with Intel® Turbo Boost Technology) - 3MB Intel® Smart Cache	Software	Getac Utility Adobe® Reader®
VGA Controller	Intel® HD Graphics 520 ⁱ	Security Feature	Intel vPro™ Technology TPM 1.2 Fingerprint scanner Smart Card reader (only with DVD Super Multi Drive) Kensington lock
Display	13.3" TFT LCD XGA (1024 x 768) 700 Nits display Optional 1400 nits QuadraClear® sunlight readable touchscreen display	Power	AC adapter (90W, 100-240VAC, 50 / 60Hz) Battery ⁱⁱ : - Li-Ion smart battery (10.8V, 8700mAh) (up to 15 hours of battery life) ⁱⁱⁱ - Optional Multimedia Bay 2nd Li-Ion smart battery (10.8V, 8700mAh)
Storage & Memory	4GB DDR4 expandable to 16GB SATA 500GB HDD Optional SATA 1TB HDD Optional SATA 128GB / 256 GB / 512GB	Dimension (W x D x H) & Weight	303.5 x 263 x 60mm 3.5kg ^{iv}
Keyboard	LED backlit membrane keyboard Optional LED backlit rubber keyboard	Rugged Feature	MIL-STD-810G certified and IP65 certified MIL-STD-461F certified ^v Optional ANSI/ISA 12.12.01 Full magnesium alloy case Shock-protected removable HDD Vibration & drop resistant Optional salt fog compliance Optional night vision
Pointing Device	Touchscreen - Optional pressure sensitive touchscreen Touchpad - Glide touchpad with scroll bar	Environmental Specification	Temperature ^{iv} : - Operating: -29°C to 60°C - Storage: -51°C to 71°C Humidity: - 95% RH , non-condensing
Expansion Slot	PCMCIA Type II x 1 + ExpressCard/54 x 1 SD card reader x 1		
Multimedia Bay	Optional DVD super multi drive Optional 2nd battery Optional 2nd storage: HDD 500GB / 1TB ; SSD 128 / 256 / 512GB		
Communication Interface	10/100/1000 base-T Ethernet Intel® Dual Band Wireless-AC 8260; 802.11ac Bluetooth (v4.2 class 1) ⁱⁱ Optional SiRFstarIVTM GPS		

Docking Solutions

	Dimensions (W x D x H)	Serial Port	External VGA	Microphone	Audio Output	DC in Jack	USB	LAN	RF Antenna Connector
Vehicle Dock	354 x 315 x 98 mm	2	1	1	1	1	4	1	2 (Optional)
Office Dock	329 x 125 x 94 mm	2	1	1	1	1	4	1	--

i. Share memory size may vary by different operating system and RAM size.
 ii. Bluetooth performance and connectable distance may be subject to interference with the environments and performance on client devices, users may be able to reduce effects of interference by minimizing the number of active Bluetooth wireless devices that are operating in the area.
 iii. Battery life testing conducted under MobileMark 2007. Battery performance will vary upon software applications, wireless settings, power management settings, LCD brightness, customized modules and environmental conditions. The battery has a limited number of charge cycles and may eventually need to be replaced by a Getac service provider. Battery life and charge cycles vary by use and settings.

iv. Weight varies from configurations and optional accessories.
 v. MIL-STD-461F 90W AC adapter sold separately
 vi. Tested by a national independent third party test lab following MIL-STD-810G



Getac UK Limited
 Mitac House, Nedge Hill, Telford,
 Shropshire, TF3 3AH, U.K.
 Tel: +44 1952 207 200
 Email: sales-getac-UK@getac.com
 www.getac.co.uk

