

Glancetron 8802

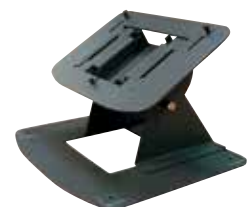
Complete POS-System - Robust and Compact



- Compact all-in-one system in miniature format – ideal for POS and hospitality
- Affordable entry-level version (Easy) or high-end processor (Ultimate)
- Top processing speed and performance thanks to Intel i5 mobile processor (2.4 GHz) (Ultimate)
- Brilliant contrast 30.7 cm (12.1") touch display
- Encompassing interface package and large selection of optional peripherals

Specifications

Hardware	8802 Easy	8802 Ultimate
CPU	Intel ATOM D525 with 1.8 GHz	Intel i5 mobile processor with 2.4 GHz
Memory	2 GB DDR3 RAM, 2x DIMM (max. 4 GB)	1 GB DDR3 RAM (max. 8 GB)
I/O ports	1x VGA, 2x gigabit Ethernet, 4x USB, 3x RS232, 2x PS/2	1x VGA, 1x DVI, 2x gigabit Ethernet, 3x audio (Mic-in, line-out, line-in), 4x USB, 2x RS232, 2x PS/2
HDD	320 GB SATA II (2,5"), SSD (optional)	320 GB SATA II (2,5"), SSD (optional)
General		
Display	30.7 cm (12.1") TFT colour display with touch screen (5-wire resistive)	
Resolution	1024 x 768 pixels	
Options	Customer display (2x20 characters) integrated on rear side, magnetic stripe reader (track 1, 2, 3), Wi-Fi, RFID reader (13.56 Mhz Mifare), 2x cash drawer port	
Power in/out	100 V~240 V / 5 V, 12 V internal power supply	
Dimensions	275 x 295 x 135 mm (W x D x H)	
Weight	6 kg	
Colour	Black	
Environment		
Operating / storage temperature	0 to 50 °C / -20 to 60 °C	
Operating humidity	0 to 80% relative humidity, non-condensing	10 to 90% relative humidity, non-condensing



Your Dealer